

Gizir
WOOD PRODUCTS



double colored
WALL PANELS

COLOR PALETTE



P310



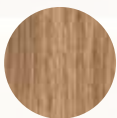
4083



P312



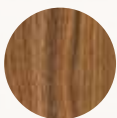
4536



P316



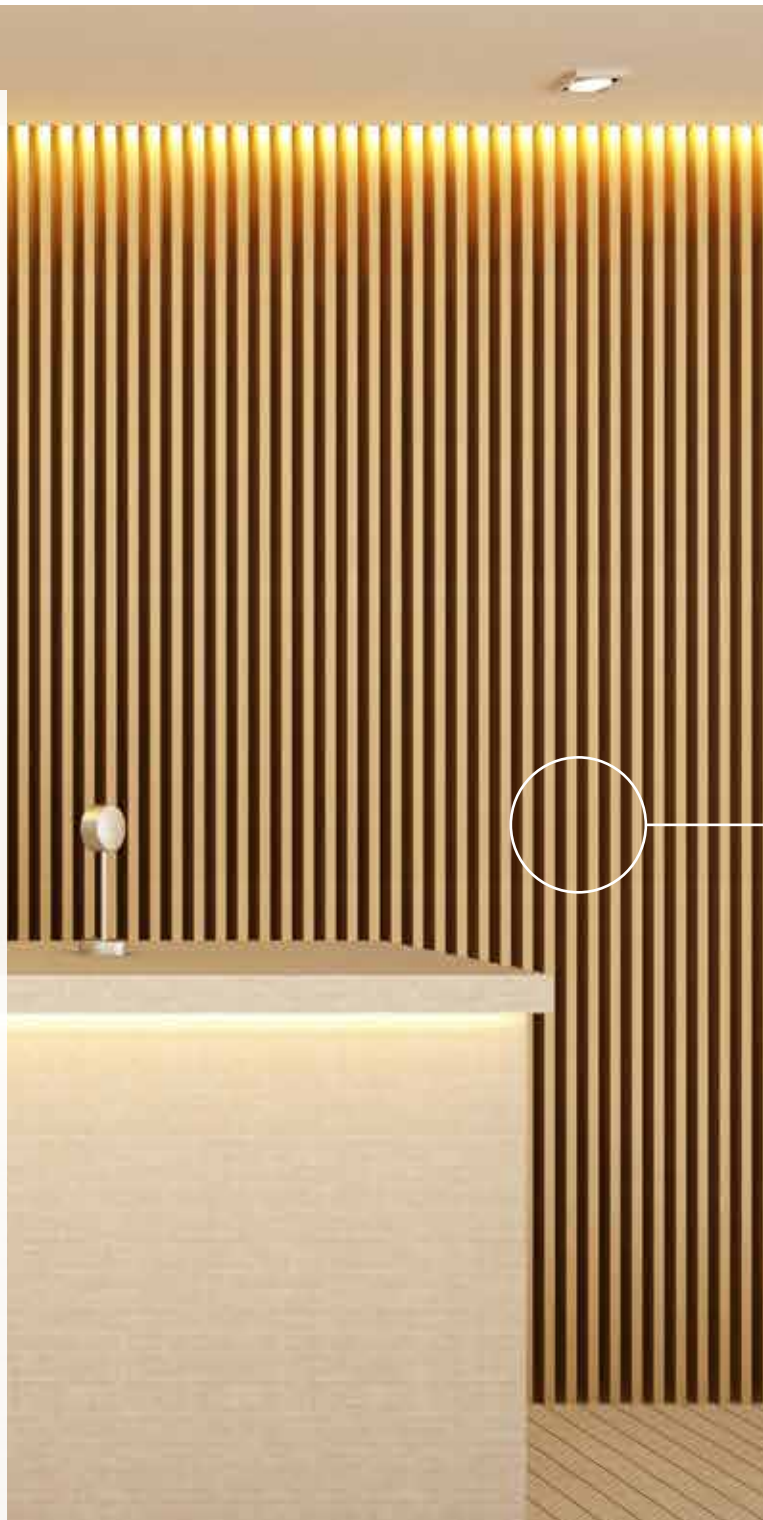
4528



P317



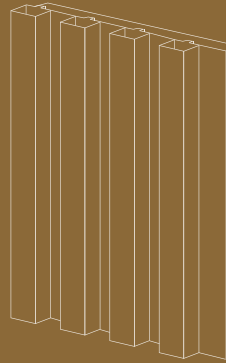
4040



DOUBLE COLORED WALL PANELS

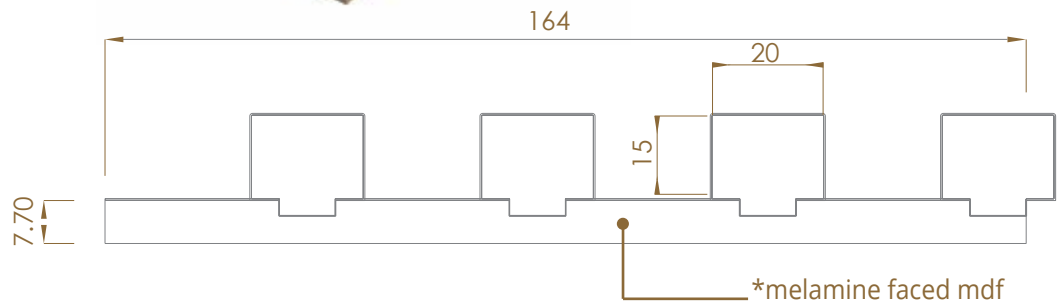
Dimensions (mm)

Width	170
Length	2800
Thickness	23



DCWP 01

P312



DOUBLE COLORED WALL PANELS

MODEL CODE:DCWP 01
COLOR CODE:P310



MODEL CODE:DCWP 01
COLOR CODE:P312



MODEL CODE:DCWP 01
COLOR CODE:P316



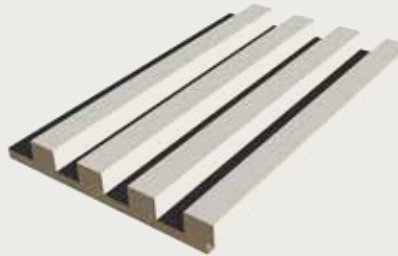
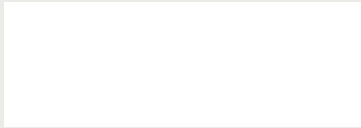
MODEL CODE:DCWP 01
COLOR CODE:P317



*Colors may vary, ask for samples.

MODEL & COLORS

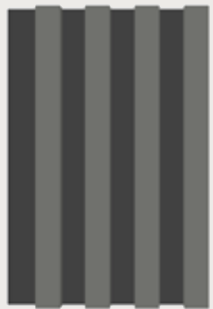
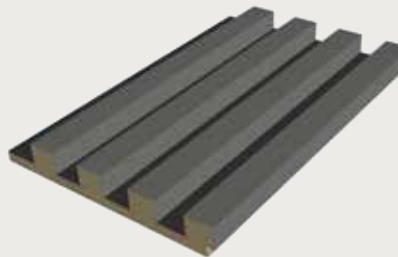
MODEL CODE:DCWP 01
COLOR CODE:4083



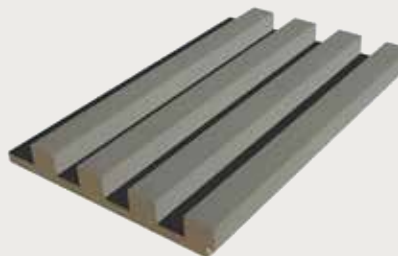
MODEL CODE:DCWP 01
COLOR CODE:4536



MODEL CODE:DCWP 01
COLOR CODE:4528



MODEL CODE:DCWP 01
COLOR CODE:4040



*Colors may vary, ask for samples.

DOUBLE COLORED WALL PANELS



*Colors may vary, ask for samples.

samples for P317

DOUBLE COLORED WALL PANELS



*Colors may vary, ask for samples.

samples for 4528



DOUBLE COLORED WALL PANELS

**HIGH
QUALITY**

TECHNICAL SPECIFICATIONS TABLE

No	FEATURE	UNIT	VALUE	STANDARD
1	Width and Length tolerance	mm / m	± 5 mm	EN 324-1 EN 622-1
2	Assessment of surface resistance to wet heat (85°C)	Class	5 (No change)	EN 12721+A1:2014:02
3	Assessment of surface resistance to dry heat (70°C)	Class	5 (No change)	EN 12722+A1:2014:02
4	Resistance to staining	Class	5 (No change)	EN 14323 6.6
5	Assessment of surface resistance to chemical cold liquids (Acetic acid, acetone, ammonia solution, citric acid, cleaning agent, etc.)	Class	5 (No change)	EN 12720:2009+A1
6	Colorfastness to light	Grey scala	5. Grade	EN 15187
7	Thickness tolerance	mm	± 0,30 mm	EN 324-1 EN 622-1
8	Density tolerance	Kg / m ³	± 720 7%	EN 323
9	Formaldehyde Potential	mg/ 100g	≤ 30.0	EN 120 EN 622-1
10	Piece Weight	kg	5,50 kgr	GİZİR A.Ş.
11	Quantity per pack	pcs	4 pcs	GİZİR A.Ş.

(*) These values are weighted average of the test results.



✉ info@gizir.com

🌐 gizir.com

İSTANBUL

Export Office & Showroom

📍 Barbaros Mah. Begonya Sok.
Nidakule Ataşehir Kuzey Sit.
No: 3/70 Ataşehir / İstanbul

☎ +90 (216) 519 33 73

ADANA

Headquarters

📍 Organize Sanayi Bölgesi,
Çanakkale Cad. No:17 01350
Sarıçam / Adana

☎ +90 (322) 394 43 40 (pbx)